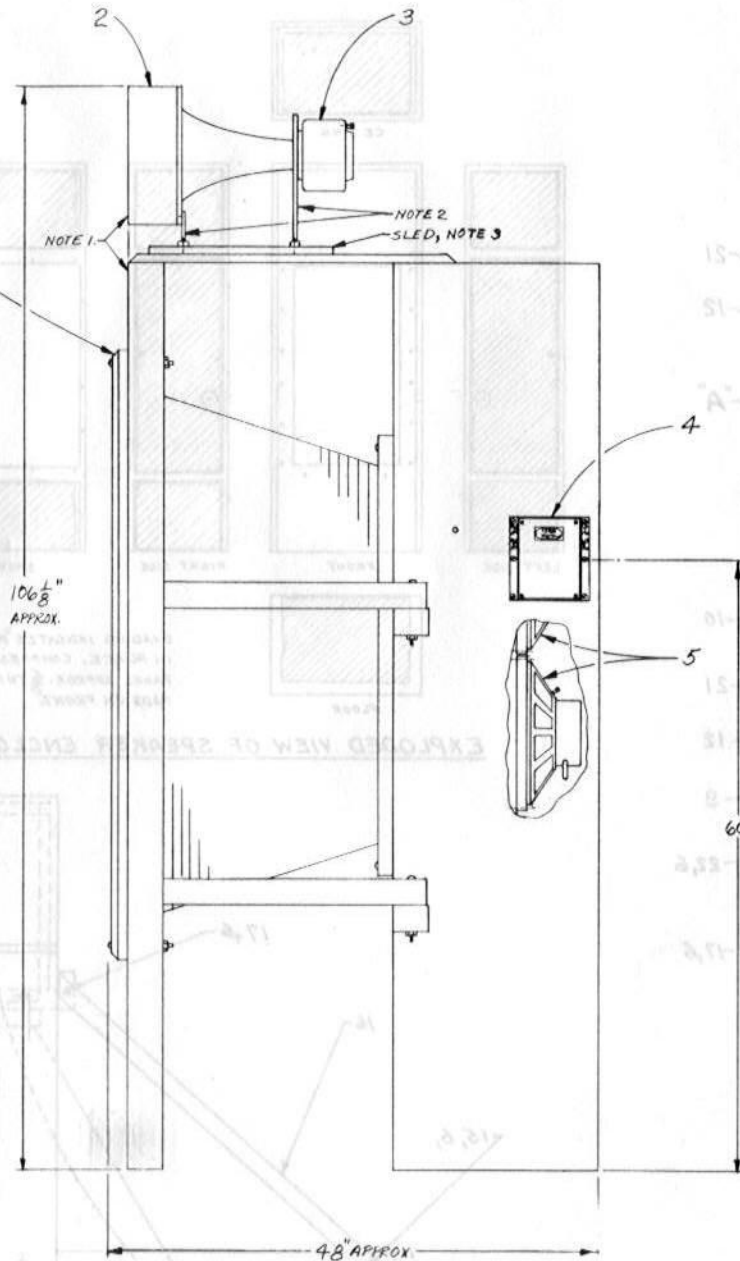
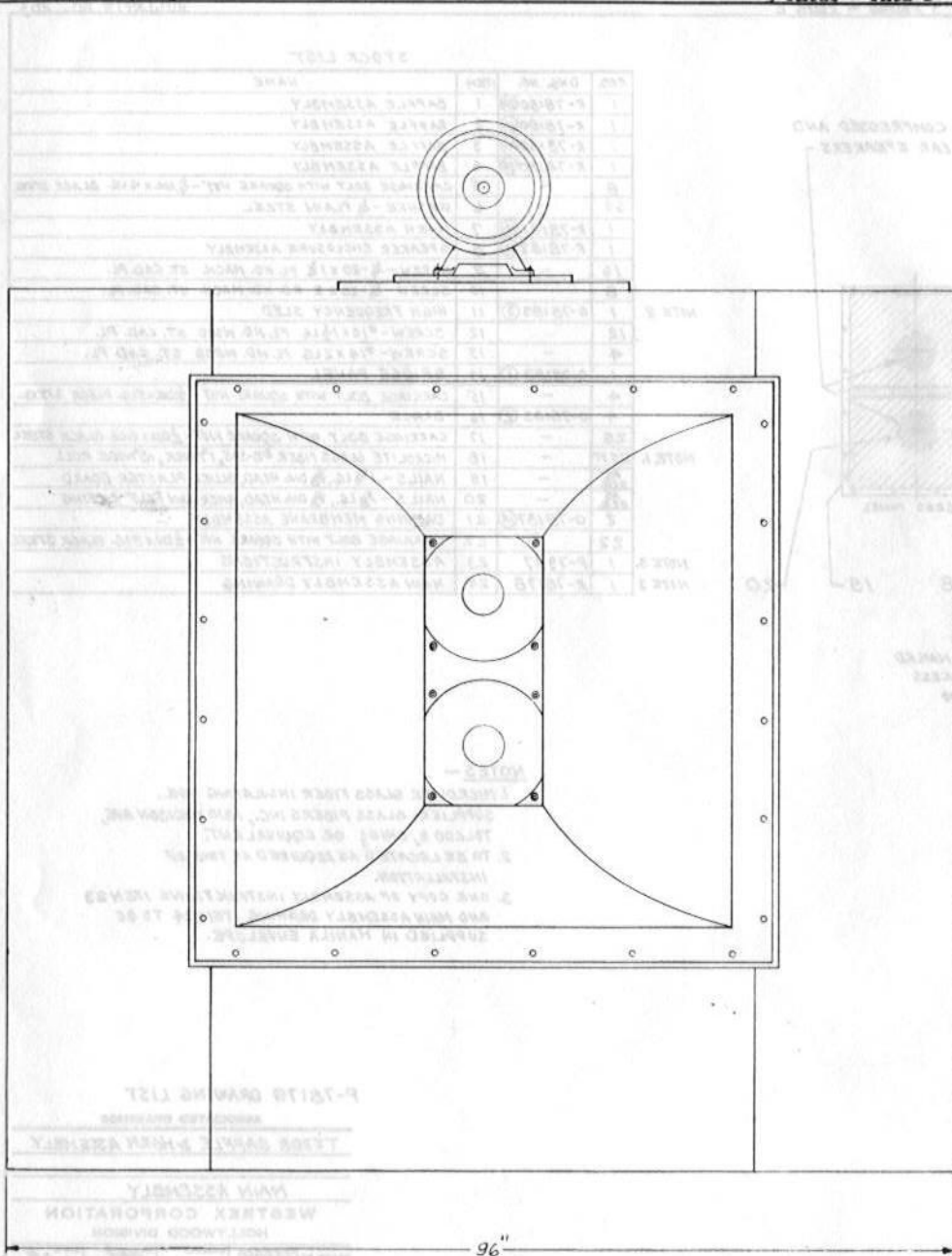




FILE 4.22

LOUDSPEAKER SYSTEMS  
 WESTREX T500 SERIES  
 DRWGS. R-79034, R-76178, P-79117  
 3 PAGES - PAGE 1

BULLETIN NO. 263



NOTES ~

1. NORMALLY FOR THE FACE OF THE CABINET TO BE FLUSH WITH THE SURFACE SHOWN.
2. THE SHORT BRACKET IS TO BE MOUNTED TO THE BACK OF THE CABINET WHICH FASTENS TO THE SURFACE ATTACHES TO THE SURFACE ITEM 4, USING THE SHORT BRACKET TO ATTACH THE SPEAKER TO THE SURFACE BRACKET IS DRIVEN INTO THE SURFACE MAY BE ADJUSTED TO THE SURFACE
3. THE HIGH FREQUENCY DRIVER SHOULD BE MOUNTED TO THE SURFACE BE FASTENED TO THE SURFACE PHASING ADJUSTMENT IS PROVIDED

R-79034

96"

48" APPROX

60"

106 1/8" APPROX.

STOCK LIST

REQ	DMG. NO.	ITEM	NAME
1		1	T520B BAFFLE & HORN ASSEMBLY
1		2	T550A ACOUSTIC LENS
1		3	T530A HIGH FREQUENCY SPEAKER
1		4	T570A NETWORK
2		5	T510A LOW FREQUENCY SPEAKER

NOTES ~

1. NORMALLY FOR PROPER PHASING IT WILL BE FOUND THAT THE FACE OF THE ACOUSTIC LENS, ITEM 2, SHOULD BE FLUSH WITH THE FRONT OF THE BAFFLE ASSEMBLY AS SHOWN.
2. THE SHORT BRACKET MEMBER OF ITEM 2 MOUNTS ON THE BACK OF THE ACOUSTIC LENS USING TWO OF THE SCREWS WHICH FASTEN THE LENS TO THE HORN. THE LONG BRACKET ATTACHES TO THE FRONT OF THE HIGH FREQUENCY SPEAKER, ITEM 4, USING TWO OF THE SCREWS WHICH ATTACH THE SPEAKER TO THE SMALL END OF THE HORN. THIS LONG BRACKET IS DRILLED SO THAT THE TILT OF THE ASSEMBLY MAY BE ADJUSTED AS DESIRED.
3. THE HIGH FREQUENCY ASSEMBLY, ITEMS 2 & 4, WITH BRACKETS SHOULD BE MOUNTED ON THE SLED WHICH IN TURN SHOULD BE FASTENED TO BAFFLE & HORN ASSEMBLY, ITEM 1, AFTER PHASING ADJUSTMENTS HAVE BEEN MADE. WOOD SCREWS ARE PROVIDED WITH BAFFLE & HORN HARDWARE.

ASSOCIATED DRAWINGS

T-501A LOUDSPEAKER SYSTEM

MAIN ASSEMBLY

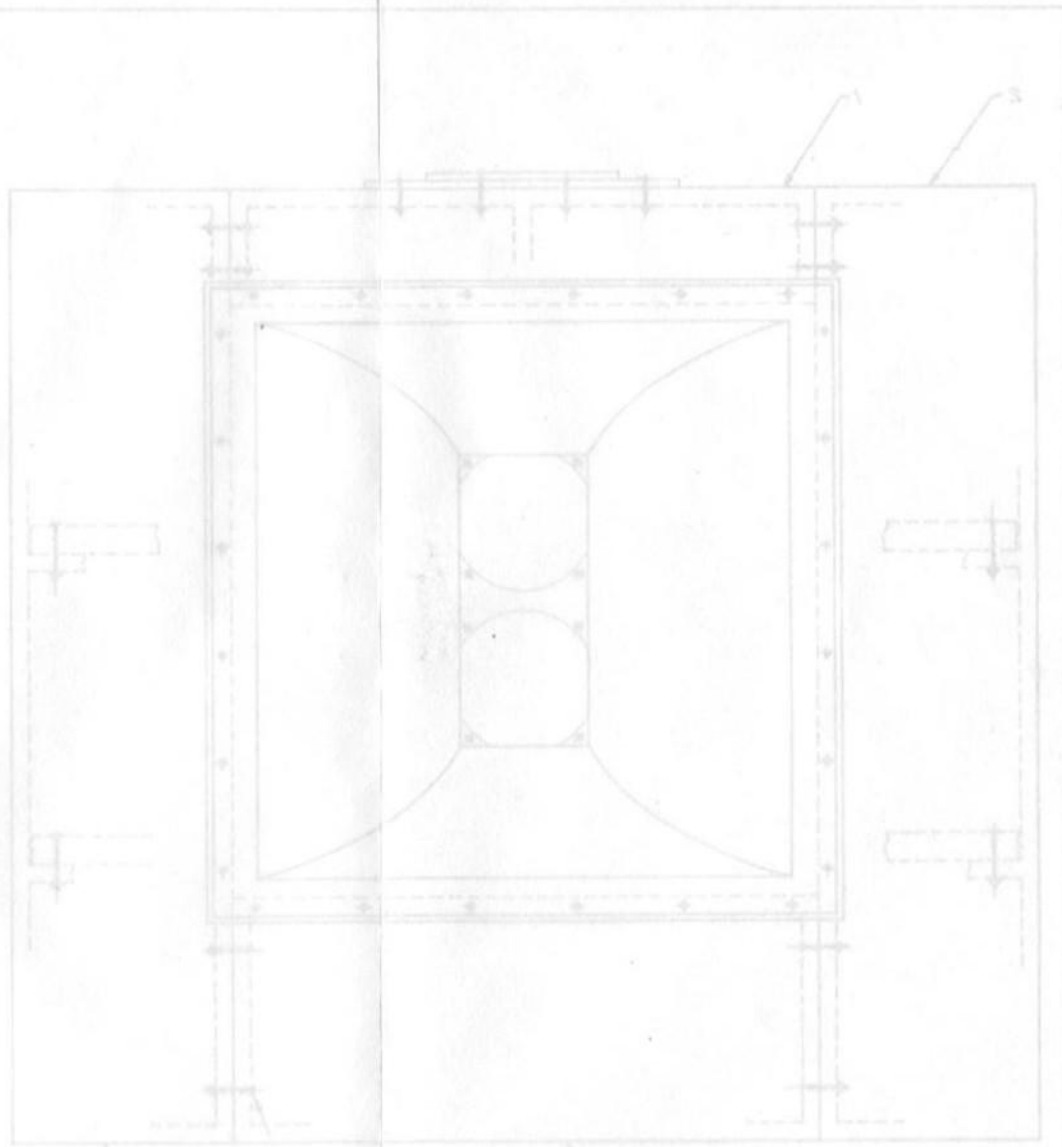
WESTREX CORPORATION  
HOLLYWOOD DIVISION

DRAWN BY: JAE  
DATE: 12-53

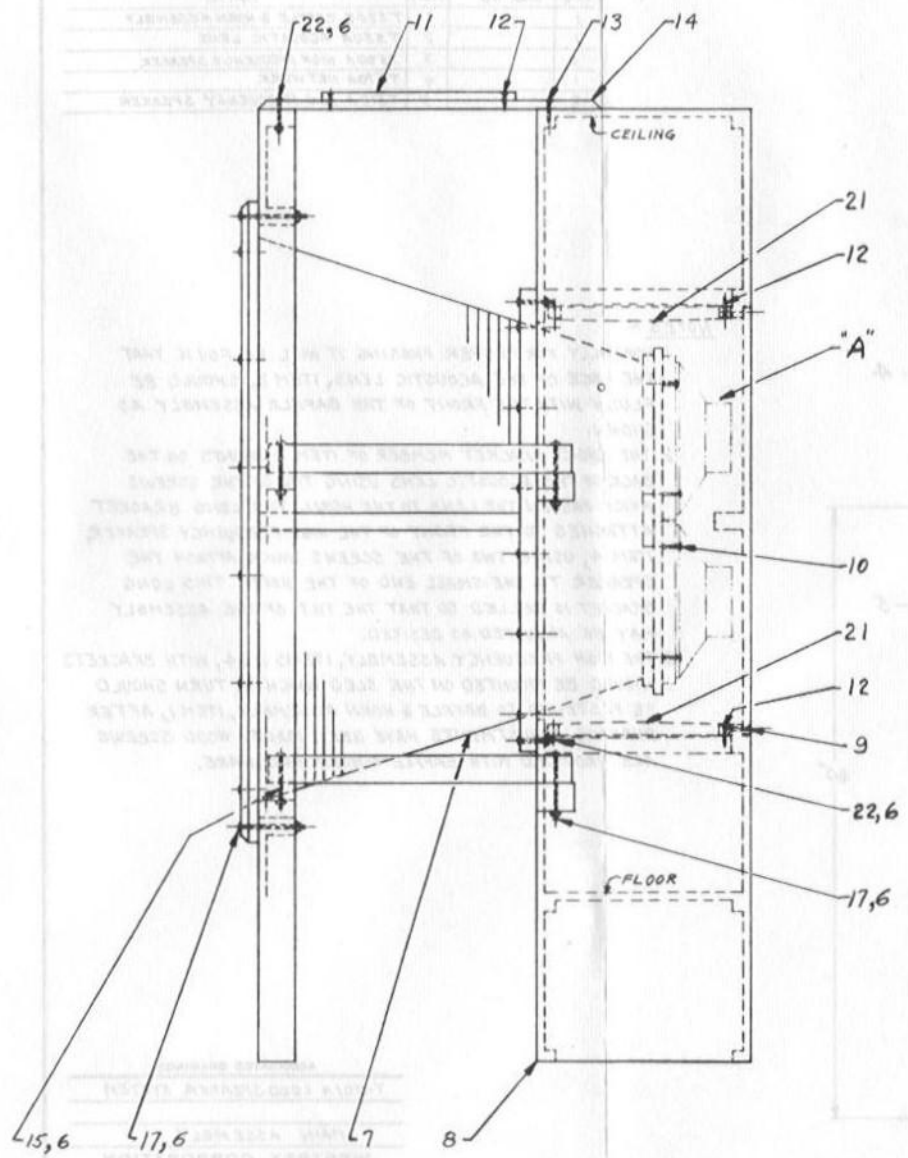
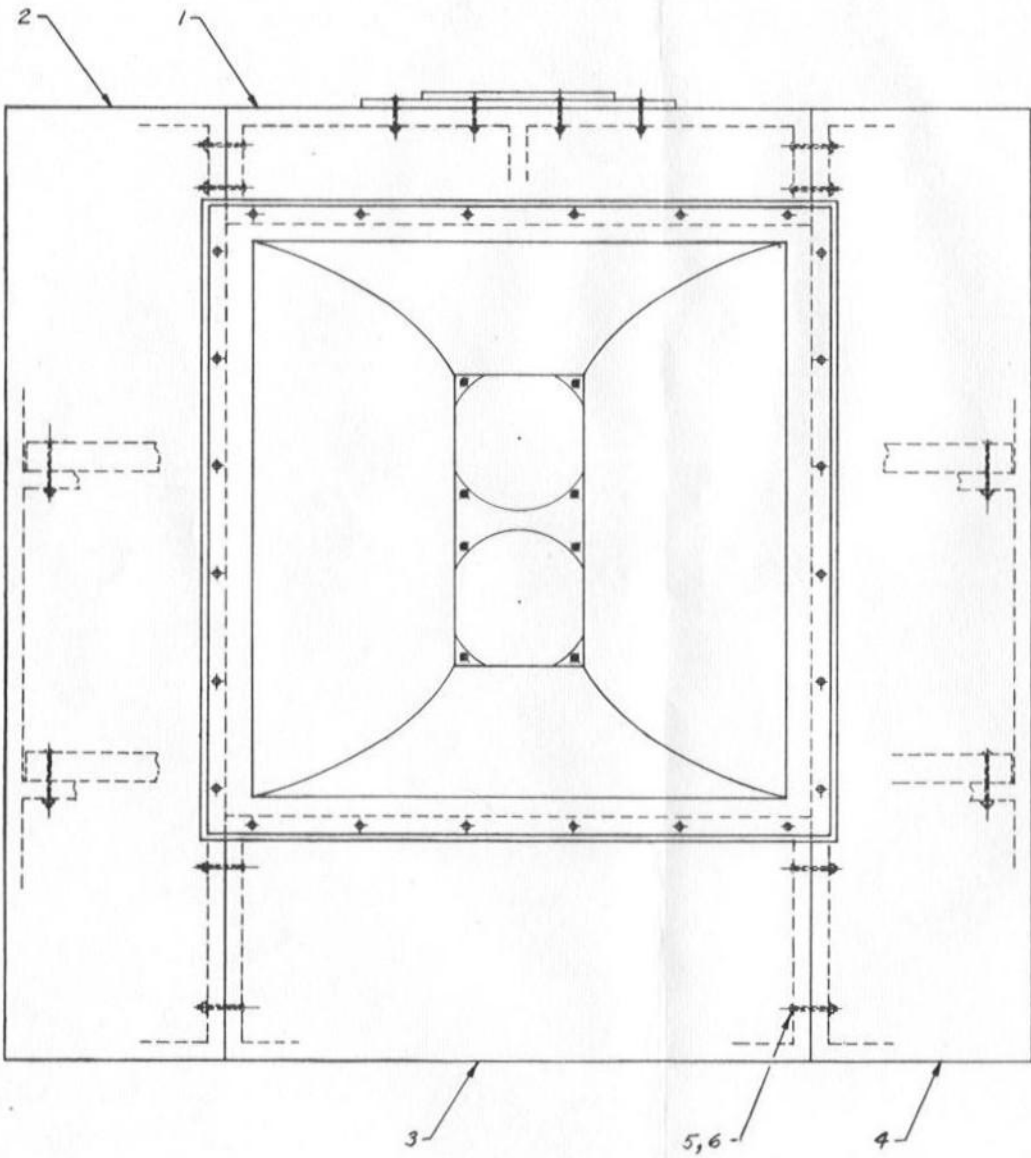
SCALE: 1/8

CHECKED: [Signature]  
APP'D: [Signature]

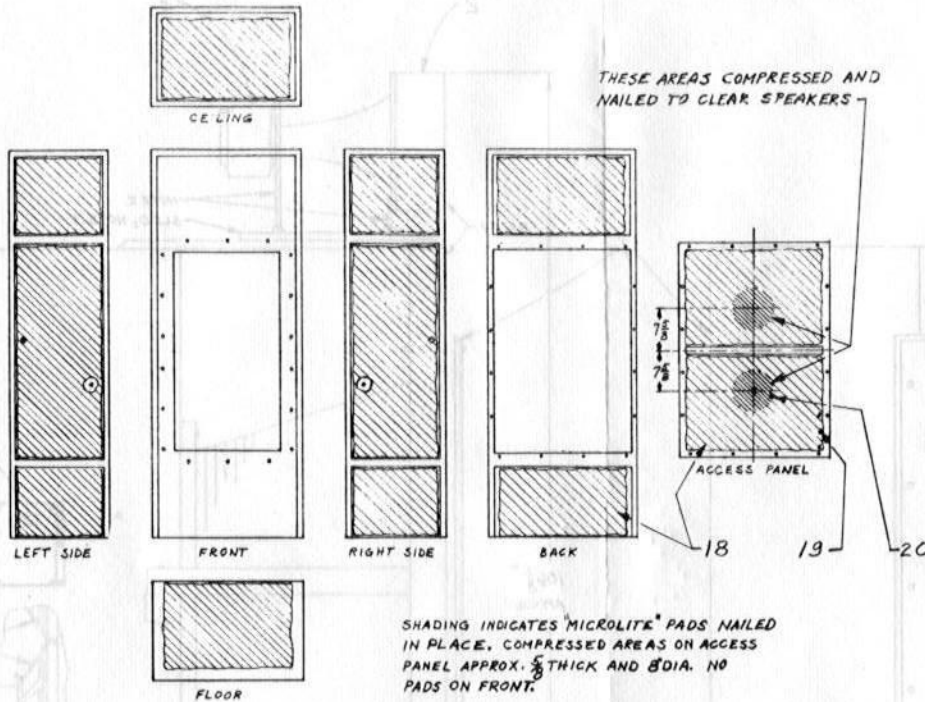
R-79034



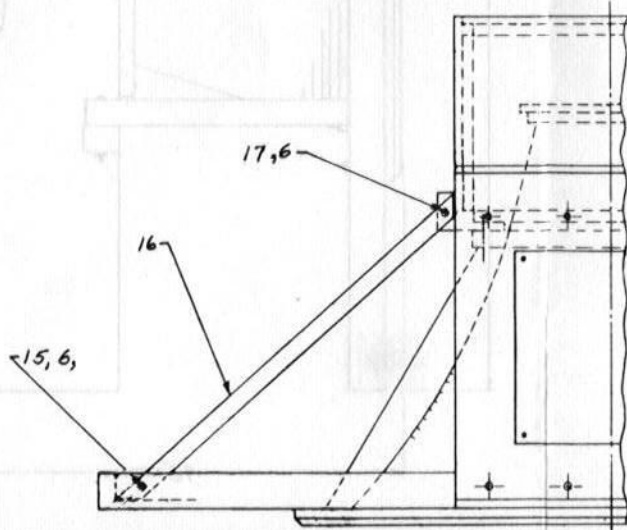
87187-R



R-78178



EXPLODED VIEW OF SPEAKER ENCLOSURE "A"



STOCK LIST

REQ.	DWG. NO.	ITEM	NAME
1	R-78180	1	BAFFLE ASSEMBLY
1	R-78180	2	BAFFLE ASSEMBLY
1	R-78180	3	BAFFLE ASSEMBLY
1	R-78180	4	BAFFLE ASSEMBLY
8	-	5	CARRIAGE BOLT WITH SQUARE NUT - 1/4 DIA X 4 LG. BLACK STEEL
62	-	6	WASHER - 1/4 PLAIN STEEL
1	R-78181	7	HORN ASSEMBLY
1	R-78182	8	SPEAKER ENCLOSURE ASSEMBLY
16	-	9	SCREW - 1/4-20 X 1 1/2 FL. HD. MACH. ST. CAD. PL.
8	-	10	SCREW - 1/4-20 X 2 RD. HD. MACH. ST. CAD. PL.
NOTE 2. 1	0-78183	11	HIGH FREQUENCY SLED
12	-	12	SCREW - #10 X 1 1/2 LG. FL. HD. WOOD ST. CAD. PL.
4	-	13	SCREW - #14 X 2 LG. FL. HD. WOOD ST. CAD. PL.
1	0-78183	14	BRIDGE PANEL
4	-	15	CARRIAGE BOLT WITH SQUARE NUT - 1/4 DIA X 5 LG. BLACK STEEL
4	0-78183	16	BRACE
28	-	17	CARRIAGE BOLT WITH SQUARE NUT - 1/4 DIA X 6 LG. BLACK STEEL
NOTE 1. 25 FT	-	18	MICROLITE GLASS FIBER #B-305, 1" THICK, 18" WIDE ROLL
75	-	19	NAILS - 1 1/4 LG. 3/8 DIA. HEAD, BLUED PLASTER BOARD
25	-	20	NAILS - 2 LG. 3/8 DIA. HEAD, AMERICAN FELT ROOFING
2	0-78187	21	DAMPING MEMBRANE ASSEMBLY
22	-	22	CARRIAGE BOLT WITH SQUARE NUT - 1/4 DIA X 3 LG. BLACK STEEL
NOTE 3. 1	P-79117	23	ASSEMBLY INSTRUCTIONS
NOTE 3. 1	R-78178	24	MAIN ASSEMBLY DRAWING

NOTES ~

1. MICROLITE GLASS FIBER INSULATING WOOL. SUPPLIER- GLASS FIBERS INC., 1810 MADISON AVE, TOLEDO 2, OHIO; OR EQUIVALENT.
2. TO BE LOCATED AS REQUIRED AT TIME OF INSTALLATION.
3. ONE COPY OF ASSEMBLY INSTRUCTIONS ITEM 23 AND MAIN ASSEMBLY DRAWING ITEM 24 TO BE SUPPLIED IN MANILA ENVELOPE.

P-78179 DRAWING LIST

ASSOCIATED DRAWINGS

T520B BAFFLE & HORN ASSEMBLY

MAIN ASSEMBLY

WESTREX CORPORATION  
HOLLYWOOD DIVISION

DRAWN BY: FEARNA CHECKED: [Signature] DATE: 4-9-53

SCALE: 1/8 **R-78178**



Examine print R-78178 Baffle and Horn Assembly, noting that the baffle is composed of four parts: one each - left, right, top and bottom section. Also note that the four sections of the baffle are fastened together with 4" carriage bolts through mating boltholes, and are attached to the horn section with 6" carriage bolts. The horn section, in turn, is attached to the speaker enclosure with 3" carriage bolts.

For ease of assembly, stand the horn, item 7, with the large end on the floor. Raise each corner and insert two 6" carriage bolts, one on each side of each corner. Note that the head of the carriage bolt is toward the floor.

Obtain 8 small pieces of 2" thick scrap wood to use as shims. Place all four sections of the baffle on the corresponding bolts protruding from the horn corners, leveling them with the 2" shims at the outer corners. This indexes the baffle with the horn. Fasten the baffle sections together, finger-tight, with 4" carriage bolts (8), tighten nuts on the protruding horn bolts, also finger-tight.

Bring the speaker enclosure assembly, item 8, into approximate position and raise the baffle and horn unit into a standing position as shown on R-78178. Push small end of horn into speaker enclosure box. Insert 3" bolts and tighten, finger-tight.

Put all four braces, item 16, in place and tighten mounting bolts, with fingers, using 5" bolts on baffle end and 6" bolts on speaker enclosure end.

Square up unit as assembled on the floor, making sure baffles and speaker enclosure are flat on the floor. Tighten all carriage bolts securely. Insert balance of baffle-to-horn 6" bolts and tighten securely.

Place bridge panel, item 14, in place on top and fasten to baffle edge with four 3" carriage bolts and to horn enclosure with four 2" flat head wood screws.

Do not fasten sled, item 11, in place until high frequency speaker assembly has been mounted and phased.

Put the two damping membrane assemblies (burlap), item 21, in place and mount with flat head wood screws.

The T520B Baffle & Horn Assembly is now ready for mounting of the speaker units and the network.

ISSUE 1/2 1954

T520B USED ON	R-78178	DWG.	CH.	T520B HORN AND BAFFLE ASSEMBLY ASSEMBLY INSTRUCTIONS
	DR. J. K. J.			
WESTREX CORPORATION HOLLYWOOD DIVISION				ENG. S. P. 79117